

**Securepoint Security System**

Version 2007nx



### **HTTP proxy authentication with radius to a Windows 2003 server**

The Remote Authentication Dial-In User Service (RADIUS) is a client-server-protocol which is used by users with dial-in connections to authentication, authorization and accounting (triple A system) to a network. Securepoint Security Solutions can authenticate at a proxy by RADIUS. MS Windows includes the program internet authenticate service (IAS), which can handle RADIUS compatible queries.

Target: The proxy of the Securepoint Security Appliance should use a MS Windows 2003 server to authenticate the user of the proxy.

**Content**

1	Configuration of the RADIUS authentication on a MS Windows 2003 Server system .....	4
1.1	Setting the internet authentication service (IAS).....	4
2	Configuration of RADIUS authentication at the Securepoint Security Appliance.....	10
2.1	Create network objects .....	10
2.2	create firewall rules .....	11
2.3	configure HTTP – proxy .....	12
2.4	Browser configuration.....	14

## 1 Configuration of the RADIUS authentication on a MS Windows 2003 Server system

### 1.1 Setting the internet authentication service (IAS)

Follow this approach:

Windows offers with the IAS a program that can handle RADIUS compatible queries. This service has to install on the Windows Server system.

- Start by using following path: *Start -> Control Panel -> Add or Remove Programs -> Add/ Remove Windows Components*. Check *Network Services* in the window and click *Details*. Check *Internet Authentication Service* and click *OK* and click *Next* on the previous window.

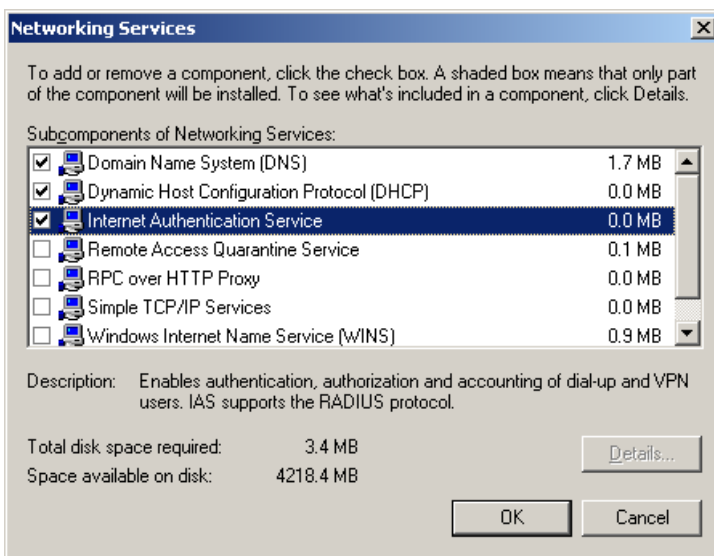


fig 1: install IAS

- Start the configuration of IAS. You will find it by following this steps: *Start -> All Programs -> Administrative Tools -> Internet Authentication Services.*
- At first you have to add the IAS to the Active Directory. Right click *Internet Authentication Service (local)*. Choose the option *register server* in the active directory.

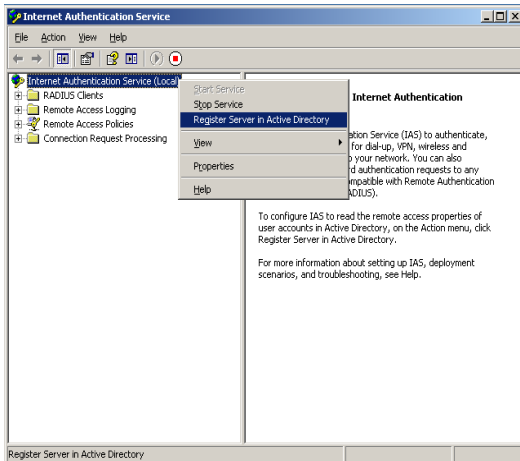


fig 2: configure IAS

- The Securepoint appliance should be a RADIUS client. Right click *RADIUS client -> New RADIUS Client.*

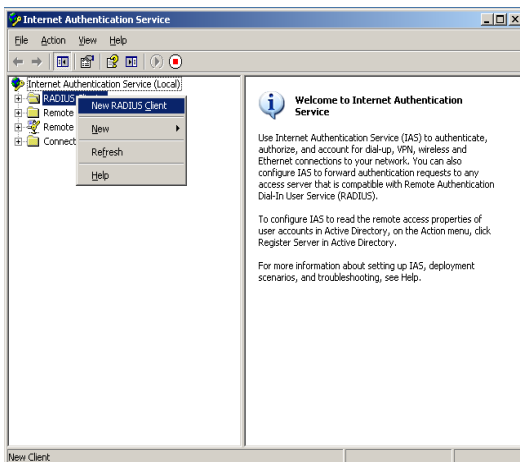


fig 3: create new RADIUS client

- The shown name is arbitrary. If a DNS entry for the firewall exists, you can use it in the field *Client address*. Otherwise you have to insert the IP- address.

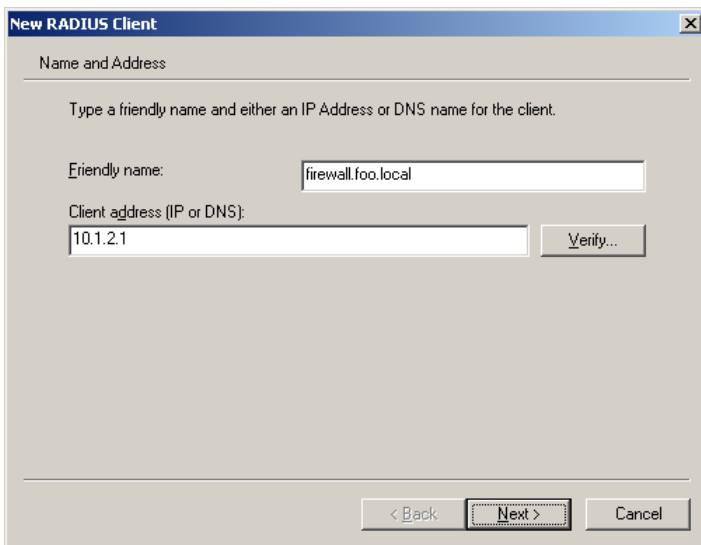


fig 4: define RADIUS client

➤ The shared secret which is to insert in the following dialog is also to be insert in the Securepoint Security Appliance.

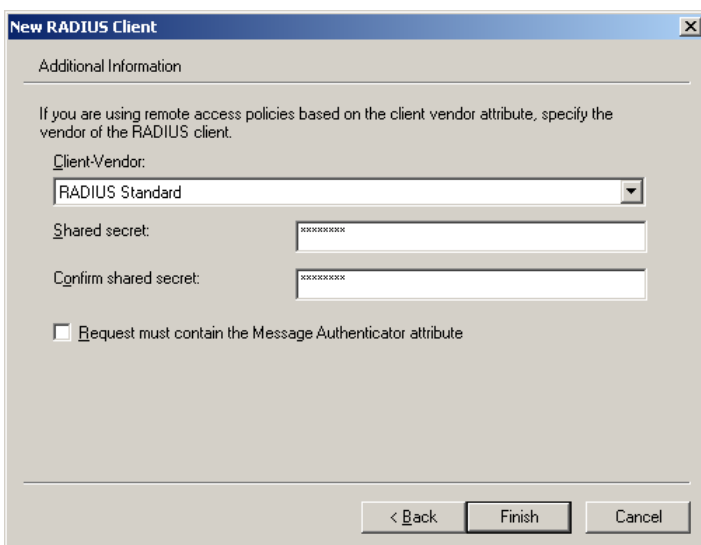


fig 5: define shared key

- You have to modify the Remote Access (RAS) Policies. Click *Remote Access Policies*. In the right frame appear predefined rules.
- Right click on the second rule *Connections to other access servers*. This Policy should get a RAS permission. Choose *Properties* from the context menu.

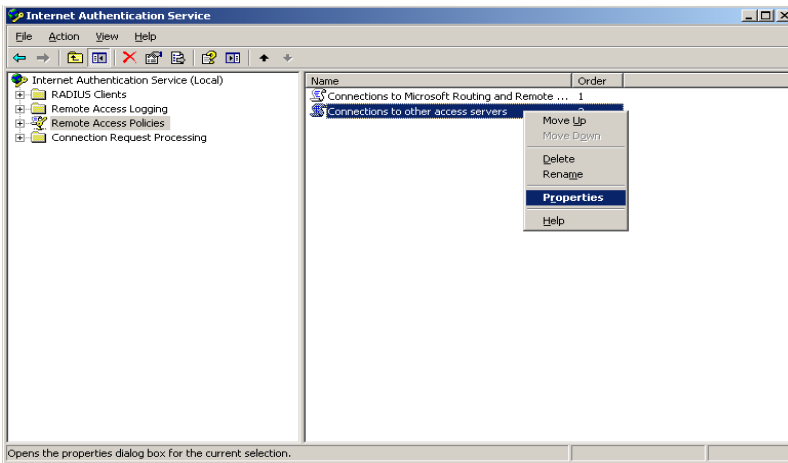
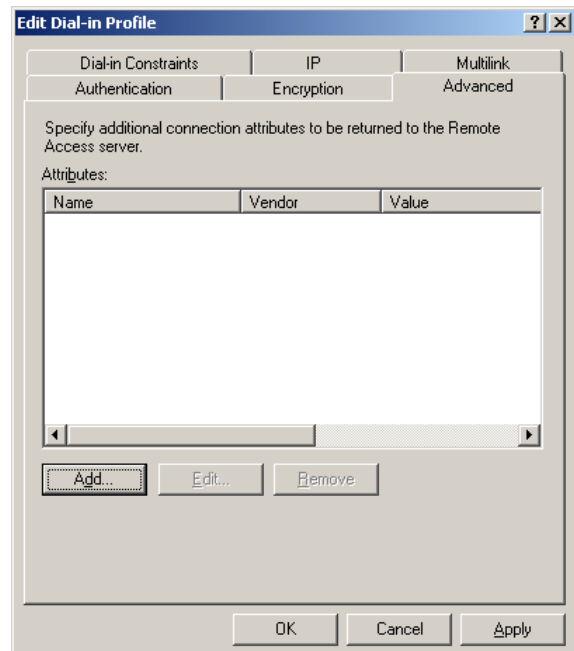
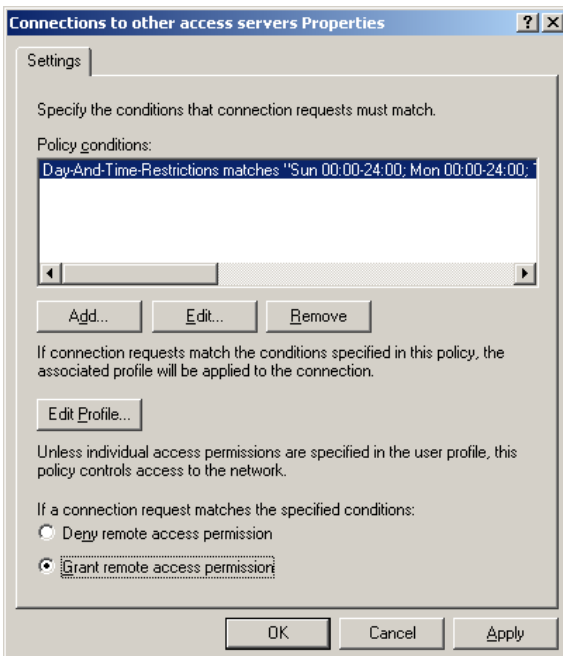


fig 6: predefined RAS policies

- The dialog *Connections to other access servers Properties* appears.
- Check the radio button *Grant remote access permission* and click *Edit profile*.
- The dialog *Edit Dial-in Profile* appears. Change to the tab *Advanced*.



- Click *Add* to apply a attribute. The dialog *Add Attribute* appears.

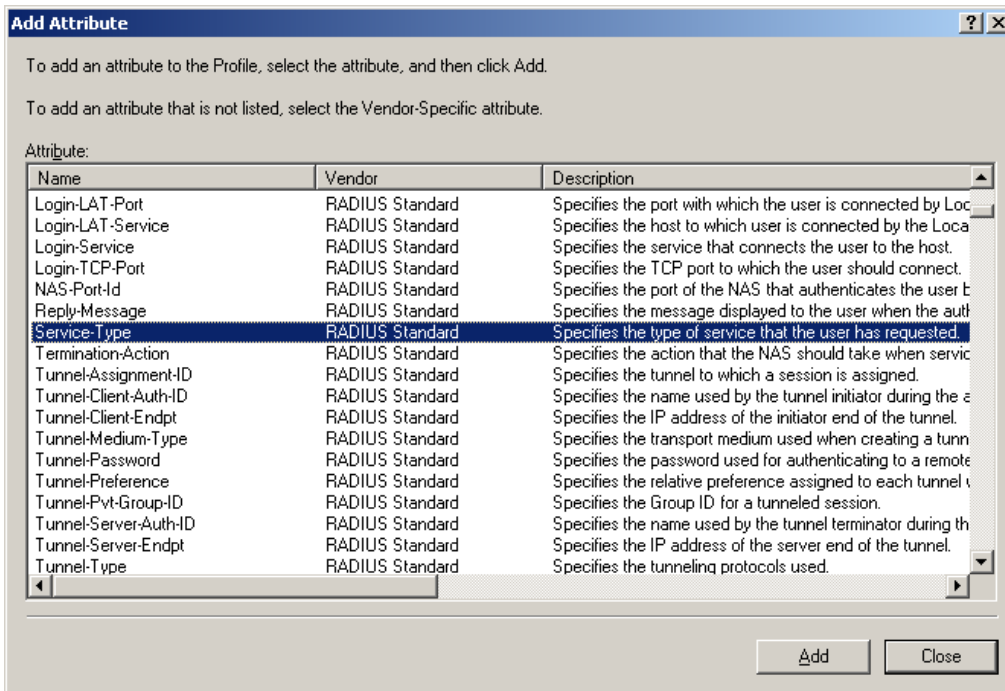


fig 9: addable attributes

- Select the attribute *Service- Type* and click the *Add* button.
- In the next dialog change the *attribute value* to *Login* and click *OK*.
- The previous dialog is no longer required and can be closed.

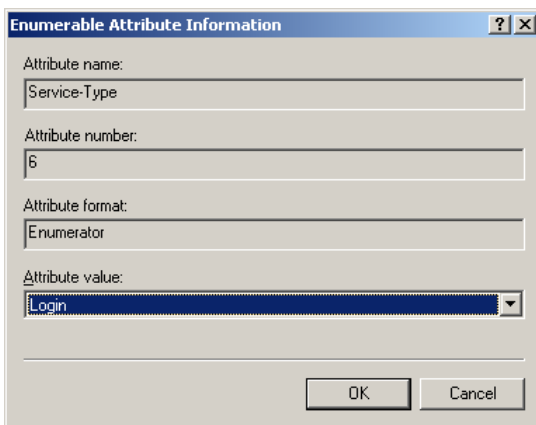


fig 10: attribute informations

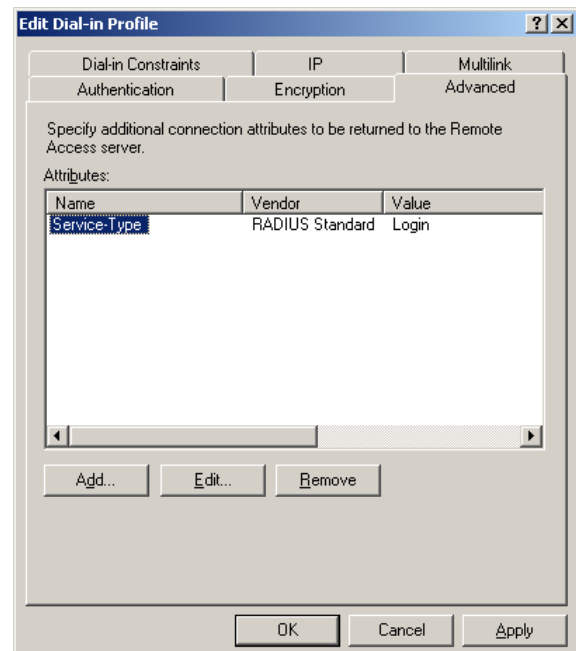


fig 11: apply attribute

- Apply the new attribute by clicking *OK*.
- Close the previous dialog by clicking *OK*.

- Every user who will login at the proxy must get dial-in access.
- Go to *Start -> Administrative Tools -> Active Directory Users and Computers*.
- Click right *Users* under your domain and choose *Properties*.
- Change to tab *Dial-in* and set *Remote Access Permission* to *Allow access*.
- Confirm your entries by click *OK*.

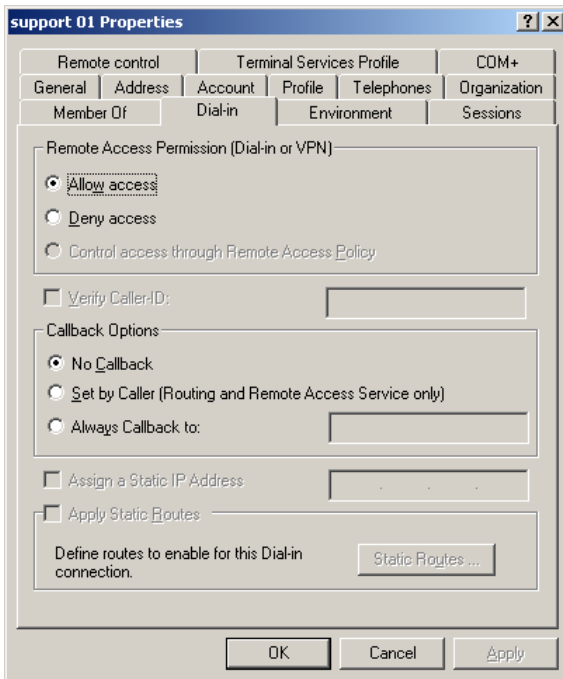


fig 12: Active Directory user properties

## 2 Configuration of RADIUS authentication at the Securepoint Security Appliance

### 2.1 Create network objects

Following this approach:

- In the Securepoint Security Manager click *Firewall* from the menu and then *network objects*.
- You have to create the internal Network and the internal firewall interface. Click the icon *Computer*.
- Then *Add computer* dialog appears. Insert data like shown below.

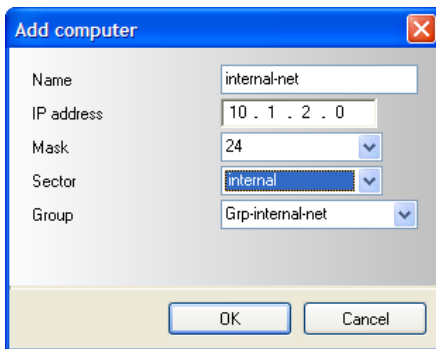


fig 12: object internal net

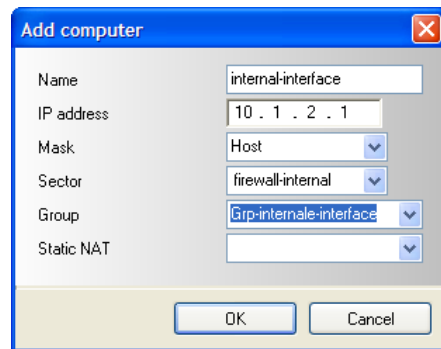


fig 14: object internal interface

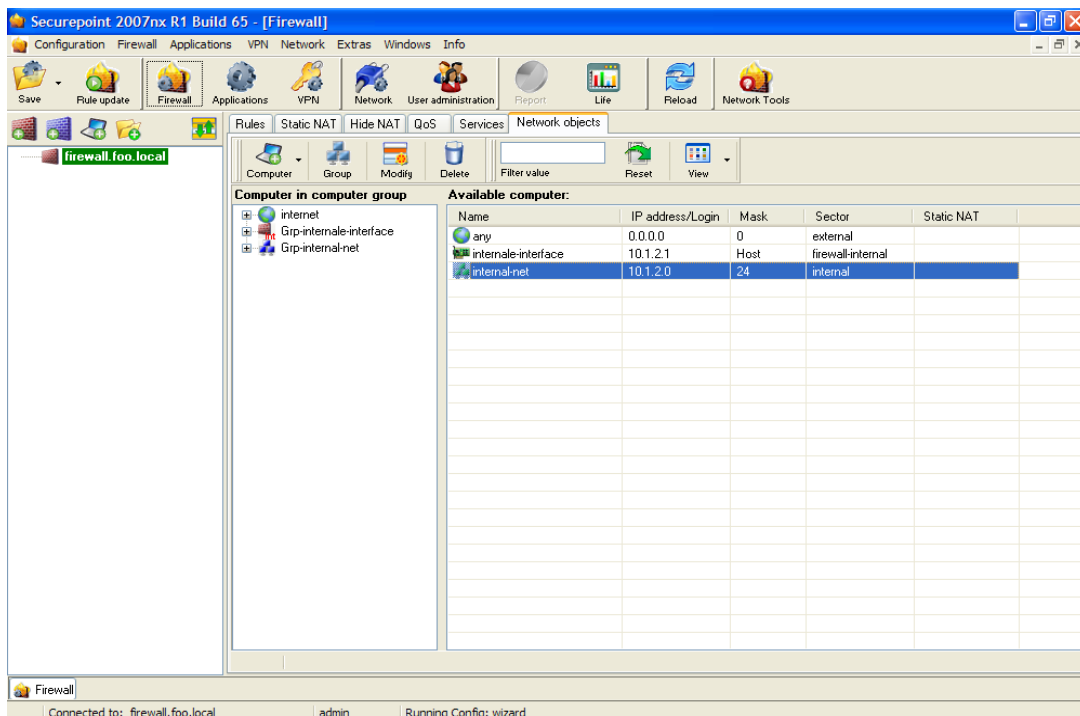


fig 15: network objects

## 2.2 create firewall rules

For using a proxy, you have to apply a firewall rule. You have to allow that the internal network uses the port of the proxy (default port 8080, service webcache) on the internal interface.

- Change to the tab *Rules*.
- Click icon *New*.

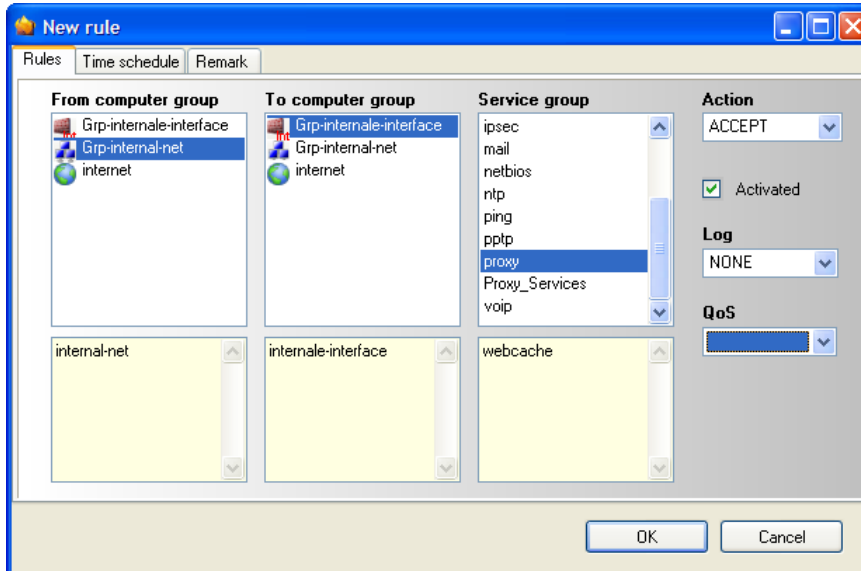


fig 16: add new rule

## 2.3 configure HTTP – proxy

use following approach:

- Click the icon *Applications* in the toolbar. Normally the windows start with the tab *HTTP Proxy* otherwise change to the tab *HTTP Proxy*.

In the section General the maximal download and upload can be limited and a parent proxy can be specified. This options are ignored in this example. Only the virus scanner is activated.

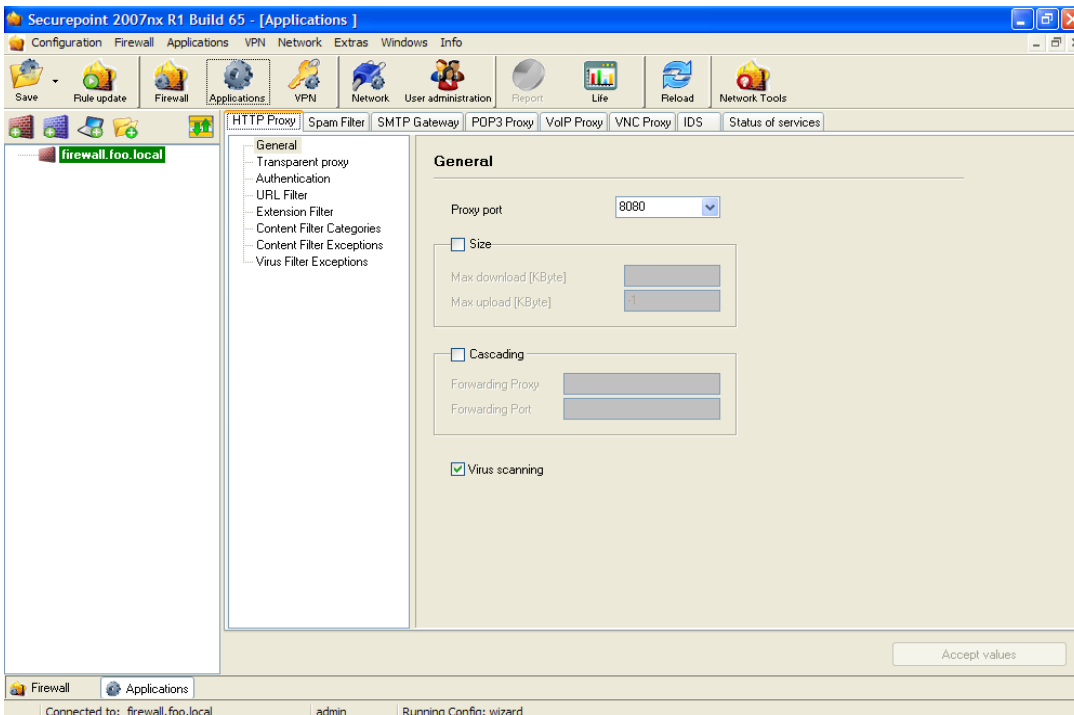


fig 17: general HTTP proxy settings

- A transparent proxy should not be used because a user authentication shall be conducted.
- So uncheck the option *Transparent proxy* in the section *Transparent proxy*.

- In the section Authentication make the settings for the RADIUS server.
- You have to insert the IP- address of the Windows 2003 server and the key (shared secret).

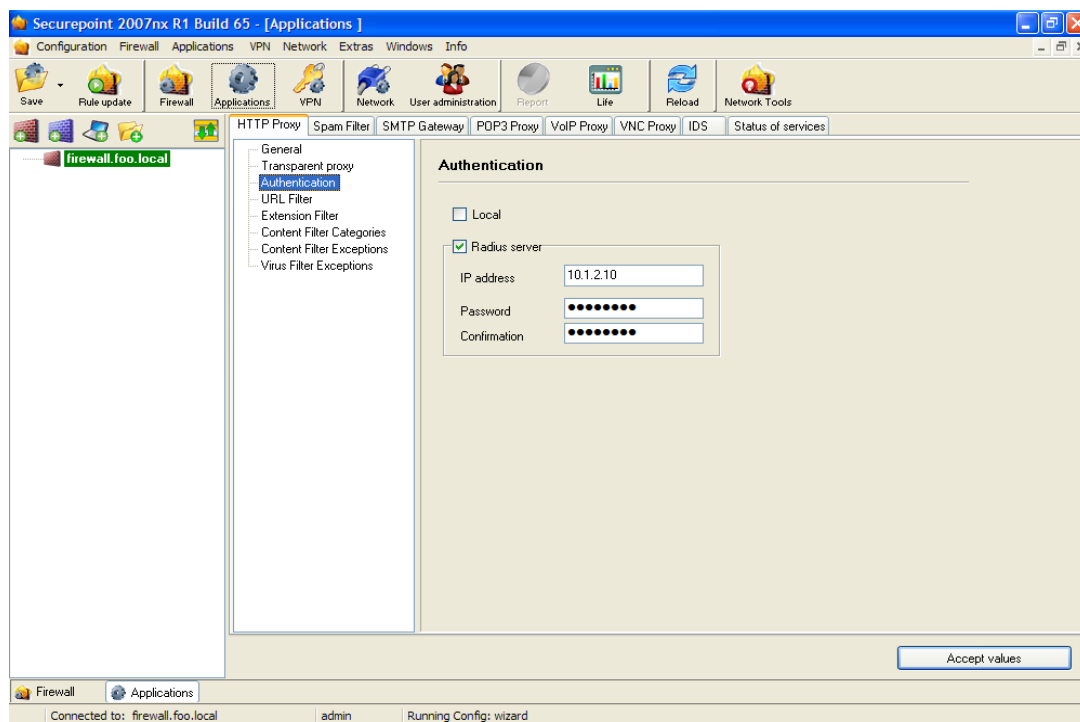


fig 18: authentication settings

In the other sections could be made more settings. Detailed informations to this configurations you will find in the manual.

- When you have saved the configuration and have made a rule updated, you can set the firewall as proxy in the browser settings.

## 2.4 Browser configuration

Use following approach:

Internet Explorer: For configuration of the proxy settings go to menu item

Tools -> Internet Options -> Connections -> LAN Settings -> Proxy server.

Mozilla Firefox: For configuration of the proxy settings go to menu item

Tools -> Options -> Advanced -> Network -> Settings